

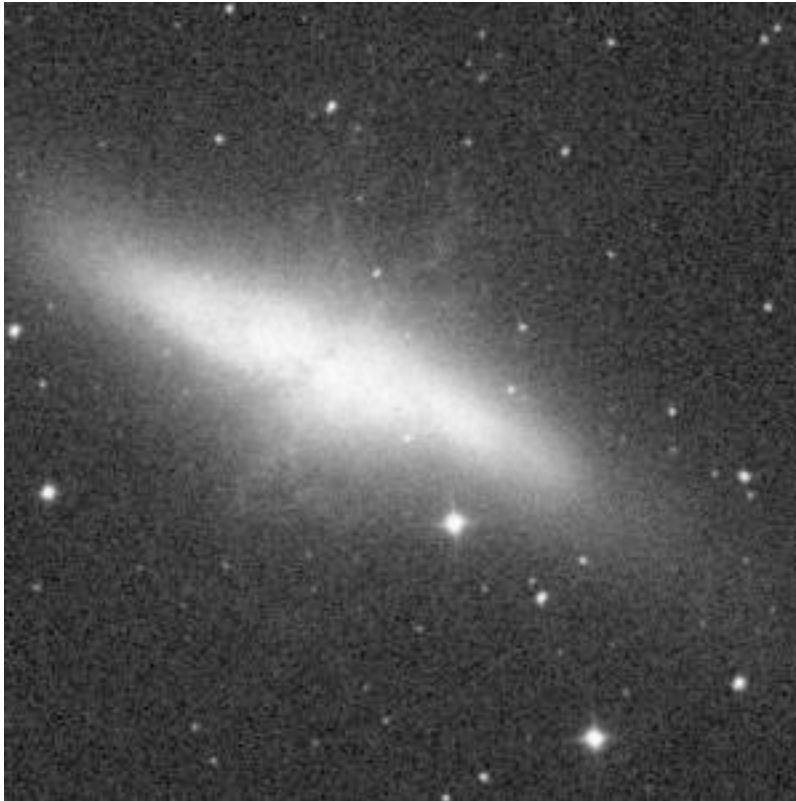
**Bell Observatory  
Observing Plan  
January 2014  
Updated January 27 2014**

Below is the observing plan and procedures for January 2014. Please direct any questions to Dr. Carini

**00. SN 2014J 09 55 42.12, 69 40 25.88**

**Suggested guide stars: -1247,339 or -407, -256**

**Obtain 3 R band exposures with 180 second exposure times. As it fades, we will have to up the exposure times. Below is a Skyview image centered on the SN coordinates, with the same FOV as Bell. Look for a star in the Bell image not in this image.**



**0. EY Ori**

**Obtain B,V,R,I observations of EY Ori.**

**EY Ori – 05 31 10.73, -5, 39, 51.1. Make sure the field matches the attached finder chart. EY Ori is the bright star in the field. The field center is adjusted to get the comparison and check star in the field as well. Take a series of exposures in each filter, with exposure times of 1,2,3,4,5 seconds.**

## 1. NGC 5548 Campaign

Obtain 240 second exposures in the B and I filter (3 in each filter) for NGC 5548.

NGC 5548                    14 17 59.5                    25 08 12

2. Blazar Monitoring: Please observe in RA order, from west to east.

1ES 0120+340	01h23m08.9s	+34 20 50	
*1ES 0229+200	02h32m48.6s	+20 17 17	
*3c66A	02h22m32.7s	+43°03'48"	
AO 0235+164	02h38m38.9s	+16°36'59.3"	500s
J0245.2+1047	02h45m13.5s	+10°47'20"	
H0323+022	03h26m14.0s	+02°25'15"	use 300s exposures
4C 39.12	03h 34m18.4s	+39 12 25	
*0414+009	04h16m52.4s	+01° 05'24"	
0421.5+1433	04h21m33.4s	+14° 33'44"	
[HB89]0420+003	04h22m41.9s	+00° 30'20"	
0422+004	04h24m46.8s	+00° 36'06	
0502+675	05h07m56.2s	+67° 37'24"	
RGB 0521+211	05h21m45.9s	+21 12' 51"	
0528+134	05h30m56.4s	+13° 31'55"	
BL 0647+250	06h50m46.6s	+25 03 00	
RGB 0710+591	07h10m30.0s	+59 08' 20"	
PKS 0716+714	07h21m53.4s	+71° 20'36"	
PKS 0735+178	07h38m07.4s	+17° 42'19"	
OI 090.4	07h57m06.6s	+09° 56'35"	
1ES 0806+524	08h09m49.2s	+52 18 58.4	
OJ 287	08h54m48.9s	+20° 06'31"	
Q0906+6930	09h06m30.8s	+69° 30'30.8'	300s exposures
S4 0954+658	09h58m47.2	+65° 33' 55"	
1ES 1011+496	10h15m04.1s	+49° 26' 01"	
MKN 421	11h04m27.4s	+38°12'31.8"	
3C 273	12h 29m 06.7s	+02° 03' 09"	
3C 279	12h 56m 11.1s	-05° 47' 22"	

EY Ori:

